



# Steve Hollis Vice-Chair

of the Greater Birmingham and Solihull  
Local Enterprise Partnership

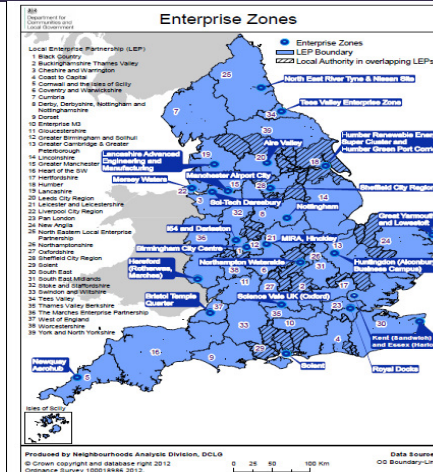


## Background to LEPs

- **June 2010 - Government invited business and council leaders to form local enterprise partnerships:**
  - Set the strategy to drive economic growth
  - Rebalance the economy towards the private sector
- **Based on functioning economic geography**
- **Business-led with a business leader as chair**

## Background to LEPs

- Oct 2010 - First wave of LEPs formed – told to “proceed until apprehended”!
- Present - 39 LEPs driving economic growth



## Then and Now

- |                     |   |
|---------------------|---|
| ■ No funding        | ■ £12bn Local Growth Fund                           |
|                     | ■ European Structural and Investment Fund - 2014-20 |
| ■ No powers         | ■ City Deal   |
|                     | ■ Growth Deal                                       |
| ■ Limited Influence | ■ Cross-party support                               |
|                     | ■ Political champions                               |

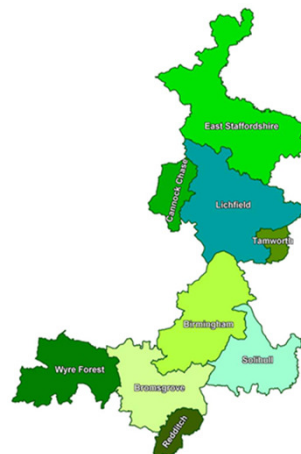
## About GBSLEP

### Simple Mission:

“To create jobs and grow the economy – and in doing so raise the quality of life for all of the LEP’s population”

### Vision:

“To re-establish Greater Birmingham’s role as major driver of UK economy outside London”



## GBSLEP economy



**Over 1.9 Million  
people  
in the GBSLEP  
economy**



**16,000 businesses  
born since 2013-  
Number 1 City!**



**Number 1 for FDI in  
the UK**



**333,000 People of  
working age with  
a degree**



**£37.1 Billion GVA**



**918,000 jobs**



**A trade surplus with China**



**Greater Birmingham & Solihull Local Enterprise Partnership**

# City Deal

UNCLASSIFIED

**Greater Birmingham & Solihull**  
Local Enterprise Partnership

**Greater Birmingham**  
*A city region powered by technological innovation*


The Local Enterprise Partnership's  
City Deal Proposal

5 July 2012

UNCLASSIFIED


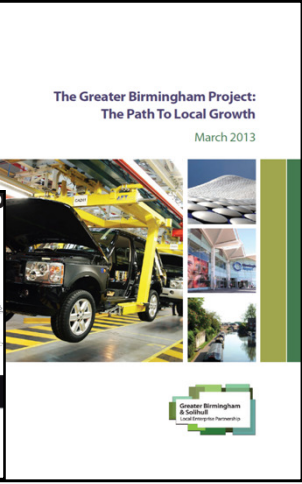
- **GBS Finance**
- **Public Assets Accelerator & Green Deal**
- **Skills & Life Sciences**

8




Greater Birmingham  
& Solihull  
Local Enterprise Partnership

## Greater Birmingham Project

- Intense Review
- Weekly visits by Lord Heseltine
- 8 workstreams
- Engagement from across private, public and voluntary sectors
- Local and national input

9



Greater Birmingham  
& Solihull  
Local Enterprise Partnership


## Strategy for Growth

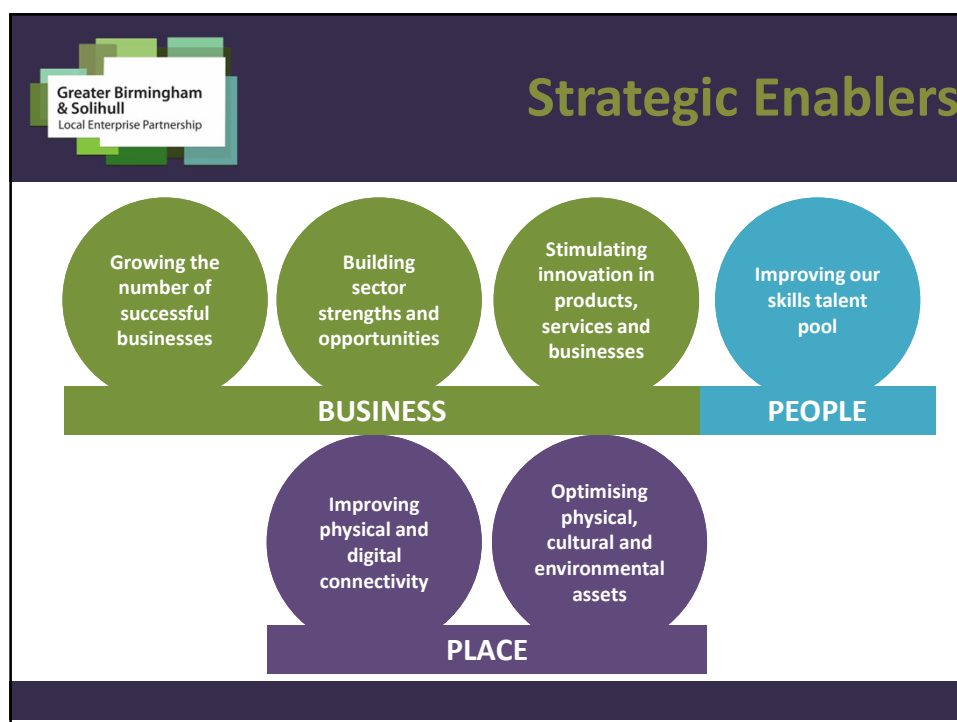
**Simple Mission:**

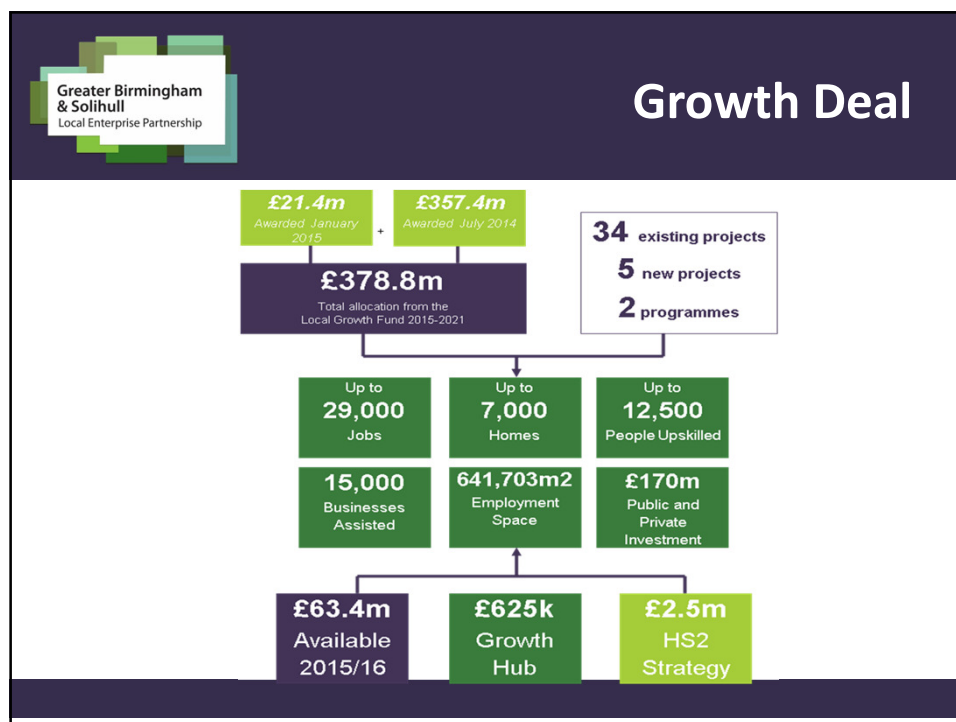
*To create jobs and grow the economy – and in doing so raise the quality of life for all of the LEP's population*

**Vision:**

*To re-establish Greater Birmingham's role as major driver of UK economy outside London*







**Greater Birmingham & Solihull Local Enterprise Partnership**

## European Structural & Investment Fund Strategy

- €255m allocated for 2014-20
- Sets strategic framework for pipelines of projects
- Significant contribution to “Business” and “People” pillars

Greater Birmingham & Solihull Local Enterprise Partnership

European Structural and Investment Fund Strategy

Greater Birmingham  
& Solihull  
Local Enterprise Partnership

## Delivery

### New development in 2015



Paradise

I-Centrum



15

Greater Birmingham  
& Solihull  
Local Enterprise Partnership

## Delivery

### Opening in 2015



Institute of Translational Medicine – June 2015

16



**Greater Birmingham  
& Solihull**  
Local Enterprise Partnership

## Delivery

### Enterprise Zone

**£275m**  
Investment  
Plan

17

**Greater Birmingham  
& Solihull**  
Local Enterprise Partnership

## Delivery

### Access to Finance

- £345m AMSCI**
- £24m Tooling Loan Fund**
- £56m Mezzanine Fund**
- £9m RGF Growth Fund**
- £8m Business Development Programme**
- £27.5m Greenbridge**

18



## Delivery

### HS2 Jobs and Skills



30 September 2014 Last updated at 16:41

#### Birmingham and Doncaster chosen for high-speed rail college

Hot Topic: Birmingham Day - MPIM - Colmore Row - Birmingham Post Business Awards Follow Us: Facebook Twitter Newsletters

Business - Business News - High Speed 2

#### 1,500 HS2 jobs for Birmingham in largest-ever public sector move



GREATER BIRMINGHAM & SOLIHULL LOCAL ENTERPRISE PARTNERSHIP  
HIGH SPEED RAIL  
COLLEGE SUBMISSION

19



## Delivery

### Skills

News story

#### Long term economic plan for the Midlands announced by Prime Minister and Chancellor

- Skills at the heart of the plan
- 100 job coaches
- Vacancies shared in advance with JCP

20

Greater Birmingham & Solihull  
Local Enterprise Partnership

## Future job opportunities



- HS2 Curzon Street Masterplan  
14000 jobs
- EZ  
40,000 Jobs  
By 2020
- HS2 Construction HQ  
1500 jobs

Greater Birmingham & Solihull  
Local Enterprise Partnership

## Conclusion

### A world of opportunity awaits!

